



WHAT IS OPTERP?

OptERP is a versatile Enterprise Resource Planning solution based on ERPNext (GNU GPL v3 Licensed) that helps businesses streamline their operations across multiple industries. Whether you're running a small startup or managing a large enterprise, OptERP adapts to your specific needs with comprehensive modules covering finance, inventory, human resources, customer relationships, supply chain, and project management. The platform offers specialized configurations for key sectors including healthcare, education, manufacturing, retail, and construction, making it a one-stop solution for optimizing business processes regardless of your industry or company size.

FEATURES

- Streamlined Implementation
- Custom Solutions
- Expert Training & Support
- Seamless Integration
- Efficient Data Migration

CORE MODULES

- HR & Payroll
- Accounts
- Asset Management
- Inventory
- CRM
- Projects

DOMAIN

-  **HEALTH CARE INDUSTRIES**
-  **MANUFACTURING INDUSTRIES**
-  **PERSONAL CARE INDUSTRIES**
-  **RETAIL & WHOLESALE BUSINESS**

OPTERP.COM





OptERP HEALTHCARE SOLUTION

**Integrated Hospital &
Clinic Management
System**



OptERP – Healthcare is a modular ERP system for hospitals, clinics, and diagnostics centers. It integrates clinical, administrative, and financial workflows, enhancing patient care, staff efficiency, and operations. Suitable for all facility sizes, it includes EHR, OPD/IPD, billing, pharmacy, diagnostics, and more in one unified platform.

FEATURES

- End-to-End Solution
- Electronic Health Records (EHR)
- Customizable Modules
- User Role Management
- Integrated Billing & Insurance
- Real-Time Reporting & Dashboards
- Local Adaptation

Consultation

- Make Appointment
- Appointments
- Emergency
- Emergency List
- Take Vitals
- All Vitals
- Make Encounter
- All Encounters

Inpatient

- Make IPR
- All IPRs
- Material Request
- IPD Service Billing
- New IPD Transfer
- All IPD Transfers

COMING SOON

- AI -Module
- Mobile App
- Telemedicine Integration
- International Expansion





OptERP MANUFACTURING SOLUTION

Complete ERP Solution
for Smart Manufacturing



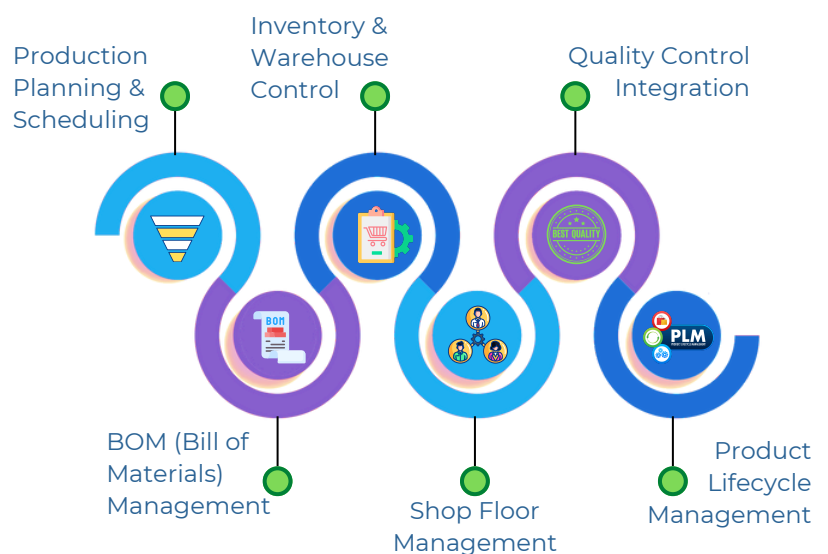
OptERP – Manufacturing is a powerful, integrated ERP system designed to digitize and optimize the entire production lifecycle, from raw material procurement to finished goods delivery. Whether you're managing a small-scale workshop or a multi-line factory, OptERP ensures efficiency, accuracy, and growth.

FEATURES

- Production Planning & Scheduling
- BOM (Bill of Materials) Management
- Inventory & Warehouse Control
- Shop Floor Management
- Quality Control Integration
- Work Order Automation
- Costing & Waste Analysis
- HRM & People
- Customer & CRM
- Delivery & Logistics

COMING SOON

- Merchandise Mobile Monitoring
- Export-Oriented Support





OptERP CUSTOMER RELATIONSHIP MANAGEMENT

Smart CRM for Smarter
Customer Relationships



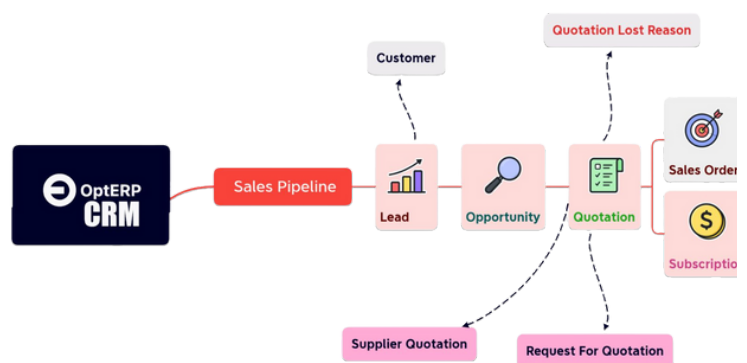
OptERP - CRM is a dynamic, customizable Customer Relationship Management system designed to help businesses centralize customer data, streamline communication, manage sales pipelines, and improve customer service. With built-in automation and powerful analytics, OptERP CRM enhances productivity, ensures better customer engagement, and drives growth.

FEATURES

- Fully Integrated with ERP
- Customizable Dashboards
- Sales Pipeline Management
- Task & Activity Scheduler
- Automated Lead Campaign
- Data-Driven Decisions

COMING SOON

- SME Digital Adoption
- Cloud Expansion
- Vertical Customization
- Global Expansion
- AI & Automation Integration





OptERP RETAIL MANAGEMENT

Smart ERP for Smarter
Retail Operations



OptERP – Retail is a smart ERP solution for modern retail businesses, streamlining sales, inventory, HR, and accounting. Ideal for single stores to multi-branch chains, it features real-time data, intuitive POS, and centralized control—boosting efficiency, reducing losses, and enhancing customer satisfaction across all retail operations.

FEATURES

- End-to-End Retail Automation
- Real-Time Inventory Tracking
- Integrated Point of Sale (POS)
- Customer & CRM Management
- Multi-Store Management
- Accounting & Finance
- HRM & Workforce Tools
- Localized Features

COMING SOON

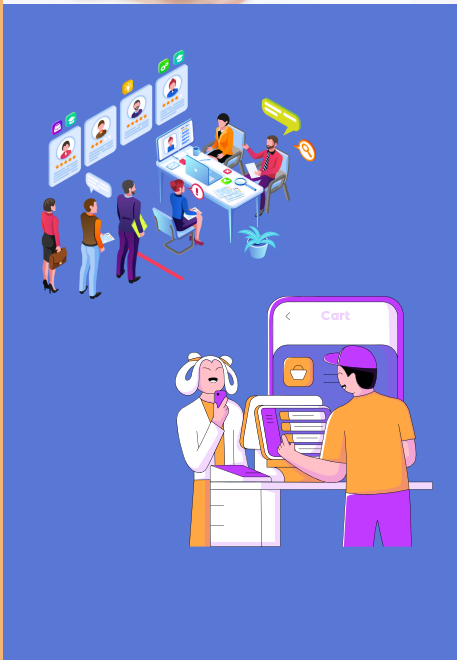
- Retail Modernization Trend
- Omni-Channel Expansion
- Mobile Apps for Retailers
- Vendor & Supplier Portals





OptERP PERSONAL CARE

Smart ERP for Beauty,
Wellness & Salon
Businesses



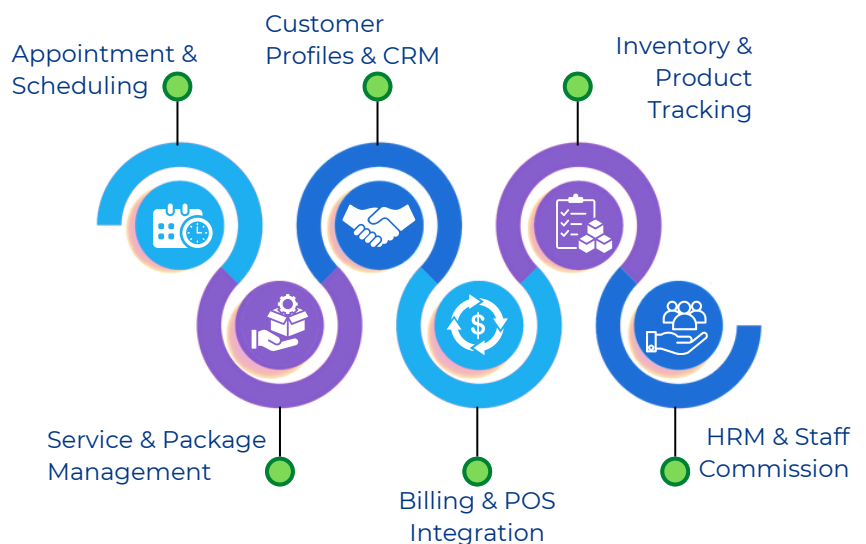
OptERP – Personal Care is a cloud ERP for salons, spas, and wellness centers. It manages appointments, billing, inventory, and staff, streamlining operations and enhancing client experiences. Suitable for single or multi-branch setups, it helps improve efficiency, customer satisfaction, and overall business growth.

FEATURES

- Appointment & Scheduling
- Service & Package Management
- Customer Profiles & CRM
- Billing & POS Integration
- Inventory & Product Tracking
- HRM & Staff Commission
- Multi-Branch Control
- Mobile-Friendly & Localized

COMING SOON

- Booming Wellness Industry
- Integration with E-Commerce
- Loyalty & Membership Expansion
- Mobile Apps for Clients & Staff
- Franchise Management





OptERP - PACKAGE TIERS

Basic Startups / Small Businesses	Standard Growing Businesses / SMEs	Enterprise Large Enterprises / Complex Verticals
₹ 5,000 /m	₹ 10,000 /m	₹ 25,000 /m
<ul style="list-style-type: none"> ✓ Sales & Purchase Orders ✓ Inventory Management ✓ Accounting ✓ User Management 	<ul style="list-style-type: none"> ✓ Sales & Purchase Orders ✓ Inventory Management ✓ Accounting ✓ CRM ✓ User Management 	<ul style="list-style-type: none"> ✓ Sales & Purchase Orders ✓ Inventory Management ✓ Accounting ✓ Asset Management ✓ HR & Payroll ✓ CRM ✓ User Management

Specialized modules are available as add-ons to the core OptERP packages for (Hospitals, Manufacturing, Personal Care and others). Pricing varies depending on module complexity and customization needs.

OPTERP.COM



Request Demo

Discover how OptERP can revolutionize your business with top-tier ERP functionalities.

 opterp.com/



OPTERP.COM



+977 9802372660



info@geofinity.com.np



<https://geofinity.com.np>



Baluwatar, Kathmandu, Nepal